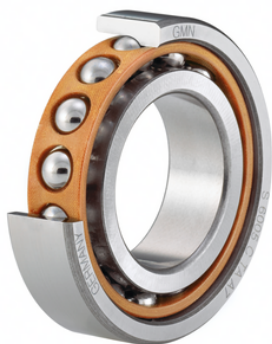


## Cages

GMN ball bearing components are continuously being optimized by ongoing development efforts to further improve their technical characteristics.

Due to their outstanding characteristics, cage types TA and TXM exhibit exceptional performance with respect to speed, load capacity, and service life.

### TA Cage



#### **Material**

##### **Laminated phenolic resin**

Phenolic resin with fine mesh cotton webbing

---

Permissible operating temperature  
120°C

---

Cage guidance  
on outer ring

---

Fabrication  
machining

---

Application  
for S, SM, KH series  
general purpose

---

Characteristics  
low friction coefficient,  
for oil and grease lubrication